

FRESE A CANDELA / MILLING CUTTERS

ATTACCO 1/2 GAS / 1/2 GAS FITTING



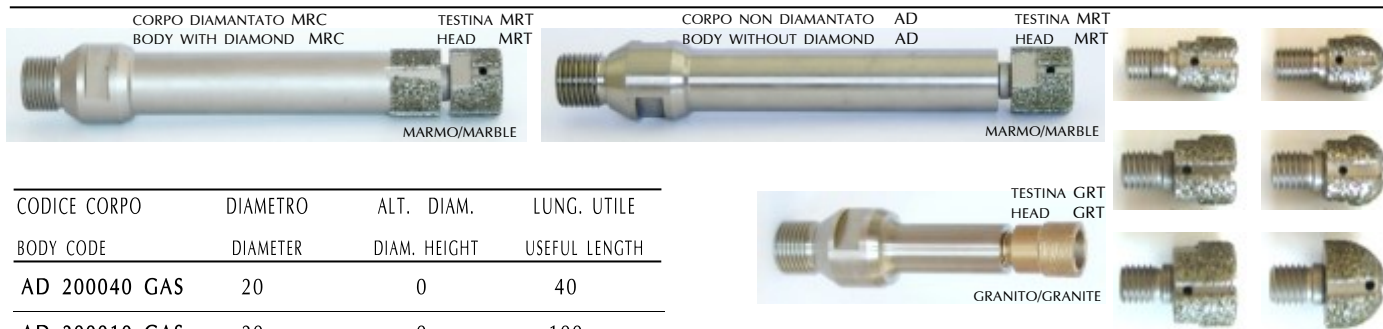
**NUOVI PRODOTTI DA PAG. 18
NEW PRODUCTS FROM PAGE 18**

CODICE CODE	APPLICAZIONE APPLICATION	DIAMETRO DIAMETER	ALT. DIAMANTE DIAMOND HEIGHT
MR 1235 GAS	MARMO/MARBLE	12	35
MR 1635 GAS	MARMO/MARBLE	16	35
MR 1640 GAS	MARMO/MARBLE	16	40
MR 1645 GAS	MARMO/MARBLE	16	45
MR 1850 GAS	MARMO/MARBLE	18	50
MR 1860 GAS	MARMO/MARBLE	18	60
MR 2065 GAS	MARMO/MARBLE	20	65
MR 2080 GAS	MARMO/MARBLE	20	80
MR 20100 GAS	MARMO/MARBLE	20	100

CODICE CODE	APPLICAZIONE APPLICATION	DIAMETRO DIAMETER	ALT. DIAMANTE DIAMOND HEIGHT
GS 1235 GAS	GR.SINT/ENG.STONE	12	35
GS 1635 GAS	GR.SINT/ENG.STONE	16	35
GS 1640 GAS	GR.SINT/ENG.STONE	16	40
GR 2430 GAS	GRANITO/GRANITE	24	30
GR 2440 GAS	GRANITO/GRANITE	24	40
GR 2450 GAS	GRANITO/GRANITE	24	50
GR 2460 GAS	GRANITO/GRANITE	24	60
GR 2470 GAS	GRANITO/GRANITE	24	70

FRESE A CANDELA CON TESTINA INTERCAMBIABILE / MILLING CUTTERS WITH CHANGEABLE HEAD

ATTACCO 1/2 GAS / 1/2 GAS FITTING



CODICE CORPO BODY CODE	DIAMETRO DIAMETER	ALT. DIAM. DIAM. HEIGHT	LUNG. UTILE USEFUL LENGTH
AD 200040 GAS	20	0	40
AD 200010 GAS	20	0	100
MRC 202010 GAS	20	20	100
AD 250010 GAS	25	0	100
MRC 252010 GAS	25	20	100
AD 250012 GAS	25	0	120
MRC 252012 GAS	25	20	120
AD 300012 GAS	30	0	120
MRC 302012 GAS	30	20	120
AD 300015 GAS	30	0	150
MRC 302015 GAS	30	20	150

CODICE TESTINA HEAD CODE	APPLICAZIONE APPLICATION	DIAMETRO DIAMETER	ALT. DIAMANTE DIAMOND HEIGHT
MRT 2020	MARMO/MARBLE	20	20
GRT 2012 ORO	GRANITO/GRANITE	20	12
MRT 2520	MARMO/MARBLE	25	20
MRT 3020	MARMO/MARBLE	30	20

TESTINE RAGGIATE / ROUNDED HEAD

MRT 2020 R	MARMO/MARBLE	20 R10	20
MRT 2520 R	MARMO/MARBLE	25 R12.5	20
MRT 3020 R	MARMO/MARBLE	30 R15	20

ALTRE DIMENSIONI SU RICHIESTA / OTHER DIMENSIONS AT REQUEST

ATTACCO 1/2 GAS / 1/2 GAS FITTING



MARMO/MARBLE



GRANITO/GRANITE



MARMO-GRANITO/MARBLE-GRANITE

MARMO/MARBLE	GRANITO/GRANITE	DIAMETRO DIAMETER	ALT. UTILE USEFUL HEIGHT
SCM GAS 20	SCG GAS 20	20	100
SCM GAS 25	SCG GAS 25	25	100
SCM GAS 30	SCG GAS 30	30	100
SCM GAS 35	SCG GAS 35	35	100
SCM GAS 40	SCG GAS 40	40	100
SCM GAS 50	SCG GAS 50	50	100
SCM GAS 60	SCG GAS 60	60	100
SCM GAS 60x200	SCG GAS 60x200	60	200
SCM GAS 80	SCG GAS 80	80	100
SCM GAS 80x200	SCG GAS 80x200	80	200

GRANITO-MARMO GRANITE-MARBLE	DIAMETRO DIAMETER	ALT. UTILE USEFUL HEIGHT
SCGS GAS 06	6	40
SCGS GAS 08	8	40
SCGS GAS 10	10	50
SCGS GAS 12	12	50
SCGS GAS 14	14	50
SCGS GAS 16	16	50
SCGS GAS 20	20	50
SCGS GAS 25	25	50
SCGS GAS 30	30	50
SCGS GAS 35	35	50

ALTRE DIMENSIONI SU RICHIESTA / OTHER DIMENSIONS AT REQUEST

MOLE E FRESE DA SCASSO / BREAKING WHEELS AND ROUTERS

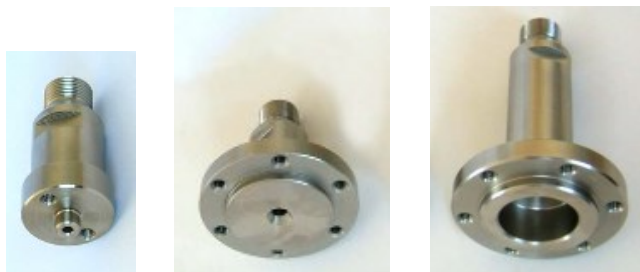
ATTACCO FLANGIA / FLANGE FITTINGS



MARMO/MARBLE GRANITO/GRANITE GRANITO DUERO/HARD GRANITE



MARMO/MARBLE GRANITO/GRANITE



CODICE CODE	DIAMETRO DIAMETER	ALTEZZA HEIGHT	LAVORAZIONE WORKING
MDS 5020	50	20	MARMO/MARBLE
MDS 5020 GR	50	20	GRANITO/GRANITE
MDS 5320 GR ORO	53	20	GRANITO DURO HARD GRANITE
MDS 5030	50	30	MARMO/MARBLE
MDS 8520	85	20	MARMO/MARBLE
MDS 8520 GR	85	20	GRANITO/GRANITE
MDS 8530	85	30	MARMO/MARBLE
MDS 85 PLATE	75	4	MARMO/MARBLE

ADATTATORI 1/2 GAS / 1/2 GAS ADAPTORS

CODICE CODE	DIAMETRO DIAMETER	ALTEZZA HEIGHT	ATTACCO FITTING
ADGAS D10	10 (MDS50)	55	FLANGIA /FLANGE
ADGAS FLA 050	50 (MDS85)	50	FLANGIA/FLANGE
ADGAS FLA 100	50 (MDS85)	100	FLANGIA/FLANGE

ATTACCO 1/2 GAS / 1/2 GAS FITTINGS



MARMO/MARBLE

GRANITO/GRANITE

CODICE CODE	DIAMETRO DIAMETER	ALTEZZA HEIGHT	ATTACCO FITTING
FDS 4520	45	20	1/2 GAS
FDS 4520 GR	45	20	1/2 GAS

FRESE PER LAVELLI / MILLING CUTTERS FOR LAVATORY

STANDARD: ATTACCO FLANGIA / FLANGE FITTING

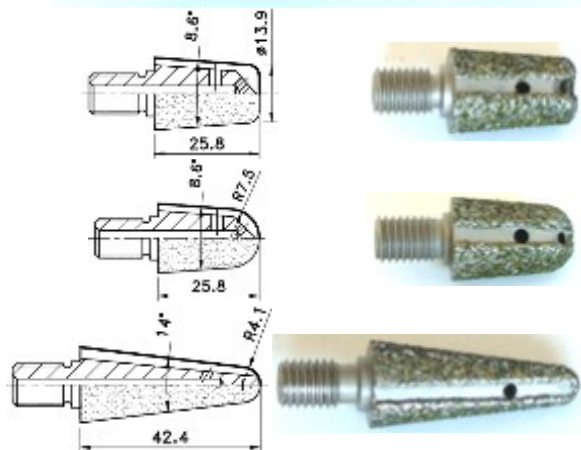


CODICE CODE	DIAMETRO DIAMETER	ALT. DIAMANTE DIAMOND HEIGHT	ALT. UTILE USEFUL HEIGHT	ALT. TOTALE TOTAL HEIGHT	RAGGIO RADIUS	GRANE * GRAIN *	APPLICAZIONE APPLICATION
LAV 505020 L125	50	50	125	155	20	D602 - D151 - D46	MARMO/MARBLE
LAV 505020 L150	50	50	150	180	20	D602 - D151 - D46	MARMO/MARBLE
LAV 505020 L195	50	50	195	225	20	D602 - D151 - D46	MARMO/MARBLE
LAV 855025 L125	85	50	155	155	25	D602 - D151 - D46	MARMO/MARBLE
LAV 855025 L195	85	50	225	225	25	D602 - D151 - D46	MARMO/MARBLE
LAV 8518025 L205	85	180	235	235	25	D602 - D151 - D46	MARMO/MARBLE
LAV 505020 L120 GR	50	50	120	150	20	D602 - D107	GRANITO/GRANITE
LAV 505020 L195 GR	50	50	195	225	20	D602 - D107	GRANITO/GRANITE
LAV 855020 L120 GR	85	50	150	150	20	D602 - D107	GRANITO/GRANITE
LAV 855020 L195 GR	85	50	225	225	20	D602 - D107	GRANITO/GRANITE

ALTRE DIMENSIONI ED ATTACCHI SU RICHIESTA / OTHER DIMENSIONS AND FITTINGS AT REQUEST

FRESE DIAMANTATE CONICHE PER SCULTURA / BAS-RELIEF DIAM. CONICAL MILLIG CUTTERS

ATTACCO 1/2 GAS CON TESTINE INTERCAMBIABILI / 1/2 GAS FITTING WITH CHANGEABLE HEAD



CODICE CODE	TIPO TYPE
PNT 2032 C	CORPO/BODY
PNT 2032 PP	PUNTA PIATTA/FLAT HEAD
PNT 2032 PR	PUNTA TONDA/ROUND HEAD
PNT 2042 PR	PUNTA TONDA/ROUND HEAD

ALTRE DIMENSIONI ED ATTACCHI SU RICHIESTA / OTHER DIMENSIONS AND FITTINGS AT REQUEST

FRESE DIAMANTATE PER SCULTURA / BAS-RELIEF DIAMOND MILLIG CUTTERS

GAMBO CILINDRICO / CYLINDRICAL SHANK



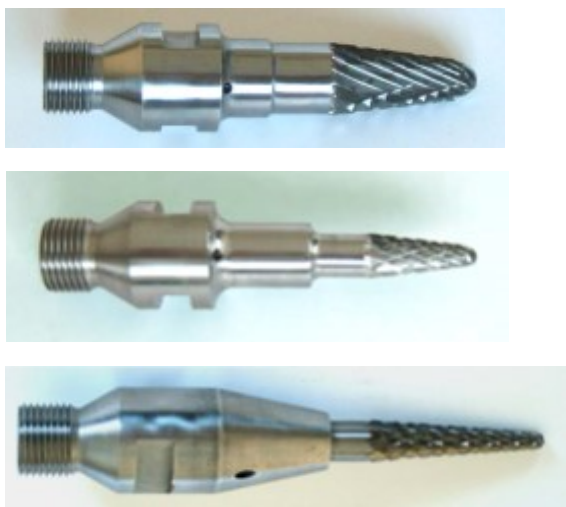
CODICE CODE	MAX MAX	MIN MIN	H DIAM. H DIAM.	GAMBO SHANK	LUNGHEZZA LENGTH
PNT 0935 CON	9	4	35	8	110
PNT 0935 CON GR (GRANITO / GRANITE)	10	5	35	10	110
PNT 1035 CON	10	5	35	10	110
PNT 1130 CIL *	11	11	30	10 *	100
PNT 1135 CIL *	11	11	35	10 *	100

* CORPO CON PASSAGGIO ACQUA / * BODY WITH WATER COOLING

FRESE IN WIDIA PER SCULTURA / BAS-RELIEF WIDIA MILLING CUTTERS

ATTACCO 1/2 GAS / 1/2 GAS FITTING

NUOVI PRODOTTI DA PAG. 18
NEW PRODUCTS FROM PAGE 18



CODICE CODE	MAX MAX	MIN MIN	H TAGL. H CUT	H UTILE USEFUL H	RAGGIO RADIUS
PNTMD 2016/6	20	10	40	70	5
PNTMD 1216/6	12	6	28	65	3
PNTMD 1216/6x50	12	5	50	50	2,5

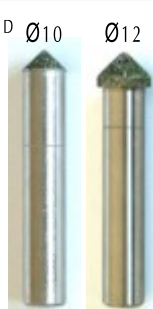
FRESE PER INCISIONE GRANITO / GRANITE ENGRAVING MILLING CUTTERS

GAMBO CILINDRICO / CYLINDRICAL SHANK



DIAMANTE POLICRISTALLINO / POLYCRYSTALLINE DIAMOND

CODICE CODE	Ø Ø	GRADI DEGREE	GAMBO SHANK
PNT PCD 1090 *	10	90	10
PNT PCD 1060 *	10	60	10



DIAMANTE ELETTROLITICO / ELECTROLITIC DIAMOND

CODICE CODE	Ø Ø	GRADI DEGREE	GAMBO SHANK
PGR 5910 G10	10	90	10
PGR 5912 G10F *	12	90	10

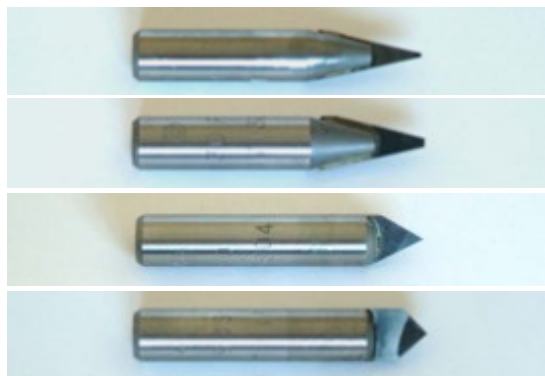
* CORPO CON PASSAGGIO ACQUA / * BODY WITH WATER COOLING

FRESE WIDIA PER INCISIONE / ENGRAVING WIDIA MILLING CUTTERS

5

GAMBO CILINDRICO / CYLINDRICAL SHANK

**NUOVI PRODOTTI DA PAG. 18
NEW PRODUCTS FROM PAGE 18**

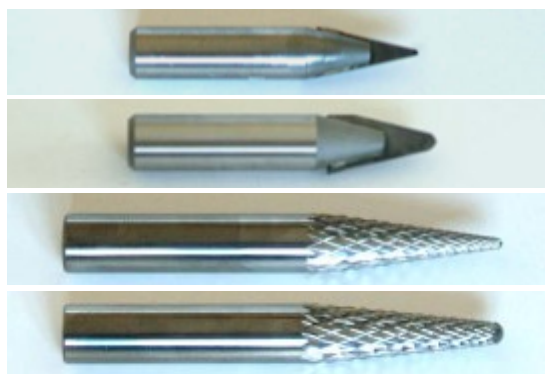


CODICE CODE	Ø	GRADI DEGREE	PIANO FLAT	GAMBO SHANK	PASS. ACQUA WATER COOLING
PNT MD 1030 P1	10	30	1	10	NO
PNT MD 1030 P2	10	30	2	10	NO
PNT MD 1060	10	60	0	10	NO
PNT MD 1090	10	90	0	10	NO

FRESE IN WIDIA PER SCULTURA / BAS-RELIEF WIDIA MILLING CUTTERS

GAMBO CILINDRICO / CYLINDRICAL SHANK

**NUOVI PRODOTTI DA PAG. 18
NEW PRODUCTS FROM PAGE 18**



CODICE CODE	Ø	GRADI DEGREE	PIANO FLAT	GAMBO SHANK	PASS. ACQUA WATER COOLING
PNT MD 1030 R1	10	30	1	10	SI / YES
PNT MD 1030 R2	10	30	2	10	SI / YES
PNT MDI 1030 R1	10	15	1	10	NO
PNT MDI 1030 R2	10	15	2	10	NO

FRESE PER INTARSIO / MILLING CUTTERS FOR INLAYING

GAMBO CILINDRICO LUNGHEZZA TOTALE 92 mm / CYLINDRICAL SHANK OVERALL LENGTH 92 mm



CODICE CODE	DIAMETRO DIAMETER	ALT. DIAM. DIAM. HEIGHT	GAMBO SHANK	FORI HOLE
SCP 041210	4	12	10	NO
SCP 051210	5	12	10	NO
SCP 061210	6	12	10	NO
SCP 081210	8	12	10	SI/YES
SCP 101210	10	12	10	SI/YES
SCP 121210	12	12	10	SI/YES
SCP 151210	15	12	10	SI/YES
SCP 181210	18	12	10	SI/YES
SCP 201210	20	12	10	SI/YES

ALTRE DIMENSIONI SU RICHIESTA / OTHER DIMENSIONS AT REQUEST

ATTACCO 1/2 GAS / 1/2 GAS FITTING



CODICE CODE	TIPO TYPE	KIT PINZE COLLETS KIT	CHIAVE WRENCH	GHIERA CLAMPING NUT
----------------	--------------	--------------------------	------------------	------------------------

PNZ 1/2 GAS	ER 16	6 - 10	CM 16	GM 16
-------------	-------	--------	-------	-------



PNZ 1/2 GAS 25	ER 25	6 - 10	CH 25	GS 25
----------------	-------	--------	-------	-------



PNZ 1/2 GAS 32	ER 32	6 - 10	CH 32	GS 32
----------------	-------	--------	-------	-------

Gli adattatori sono forniti completi di ghiera, n 2 pinze e chiave.

The adaptors are supplied complete of clamping nut, n 2 collets and wrench.

RICAMBI / SPARE PARTS

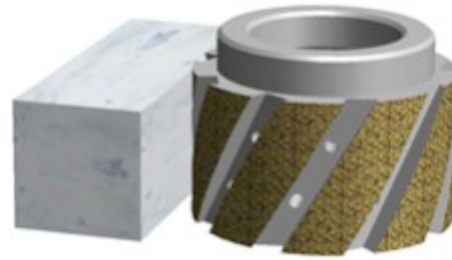
CODICE CODE	TIPO TYPE	PINZE COLLETS	DIAMETRO ESTERNO EXTERNAL DIAMETER
GM 16	ER 16	/	22
GS 25	ER 25	/	42
GS 32	ER 32	/	50
ERP 16	ER 16	6 - 8 - 10	17
ERP 25	ER 25	6 - 8 - 10	26
ERP 32	ER 32	6 - 8 - 10	33
CM 16	ER 16	/	/
CH 25	ER 25	/	/
CH 32	ER 32	/	/



STANDARD: FORO 35 / BORE 35



PROFILO Z
SHAPE Z



SPESSORE LASTRA 20 mm. / SLAB THICKNESS 20 mm.

CODICE CODE	PROFILO SHAPE	POSIZIONE POSITION	TIPO FASCIA RIM TYPE	KIT MARMO MARBLE KIT	KIT GRANITO GRANITE KIT	KIT MAR-GRA MAR-GRA KIT	APPLICAZIONE APPLICATION
MS Z20 P1E MR	Z20	1 ELE.	SETTORI/SECTOR	X		X	MAR.
MS Z20 P1S GR	Z20	1 SINT.	SETTORI/SECTOR		X	X	GRA.
MS Z20 P2E MG	Z20	2 ELE.	SETTORI/SECTOR	X		X	MAR./GRA.
MS Z20 P2S GR	Z20	2 SINT.	CONTINUA/CONTINUOUS		X		GRA.
MS Z20 P3E MR	Z20	3 ELE.	CONTINUA/CONTINUOUS	X		X	MAR.
MS Z20 P3S MG	Z20	3 SINT.	CONTINUA/CONTINUOUS		X		MAR./GRA.
MS Z20 P4L MG	Z20	4 LUX/POL.	-		X	X	MAR./GRA.
MS Z20 P5L MG	Z20	5 LUX/POL.	-	X	X	X	MAR./GRA.
MS Z20 P6L MG	Z20	6 LUX/POL.	-	X	X	X	MAR./GRA.
CODICE KIT / KIT CODE				KT Z20 MR	KT Z20 GR	KT Z20 MG	

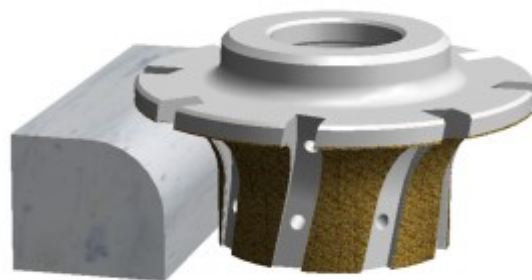
SPESSORE LASTRA 30 mm. / SLAB THICKNESS 30 mm.

CODICE CODE	PROFILO SHAPE	POSIZIONE POSITION	TIPO FASCIA RIM TYPE	KIT MARMO MARBLE KIT	KIT GRANITO GRANITE KIT	KIT MAR-GRA MAR-GRA KIT	APPLICAZIONE APPLICATION
MS Z30 P1E MR	Z30	1 ELE.	SETTORI/SECTOR	X		X	MAR.
MS Z30 P1S GR	Z30	1 SINT.	SETTORI/SECTOR		X	X	GRA.
MS Z30 P2E MG	Z30	2 ELE.	SETTORI/SECTOR	X		X	MAR./GRA.
MS Z30 P2S GR	Z30	2 SINT.	CONTINUA/CONTINUOUS		X		GRA.
MS Z30 P3E MR	Z30	3 ELE.	CONTINUA/CONTINUOUS	X		X	MAR.
MS Z30 P3S MG	Z30	3 SINT.	CONTINUA/CONTINUOUS		X		MAR./GRA.
MS Z30 P4L MG	Z30	4 LUX/POL.	-		X	X	MAR./GRA.
MS Z30 P5L MG	Z30	5 LUX/POL.	-	X	X	X	MAR./GRA.
MS Z30 P6L MG	Z30	6 LUX/POL.	-	X	X	X	MAR./GRA.
CODICE KIT / KIT CODE				KT Z30 MR	KT Z30 GR	KT Z30 MG	

STANDARD: FORO 35 / BORE 35



PROFILO A
SHAPE A



SPESSORE LASTRA 20 mm. / SLAB THICKNESS 20 mm.

CODICE CODE	PROFILO SHAPE	POSIZIONE POSITION	TIPO FASCIA RIM TYPE	KIT MARMO MARBLE KIT	KIT GRANITO GRANITE KIT	KIT MAR-GRA MAR-GRA KIT	APPLICAZIONE APPLICATION
MS A20 P1E MR	A20	1 ELE.	SETTORI/SECTOR	X		X	MAR.
MS A20 P1S GR	A20	1 SINT.	SETTORI/SECTOR		X	X	GRA.
MS A20 P2E MG	A20	2 ELE.	SETTORI/SECTOR	X		X	MAR./GRA.
MS A20 P2S GR	A20	2 SINT.	CONTINUA/CONTINUOUS		X		GRA.
MS A20 P3E MR	A20	3 ELE.	CONTINUA/CONTINUOUS	X		X	MAR.
MS A20 P3S MG	A20	3 SINT.	CONTINUA/CONTINUOUS		X		MAR./GRA.
MS A20 P4L MG	A20	4 LUX/POL.	-		X	X	MAR./GRA.
MS A20 P5L MG	A20	5 LUX/POL.	-	X	X	X	MAR./GRA.
MS A20 P6L MG	A20	6 LUX/POL.	-	X	X	X	MAR./GRA.
CODICE KIT / KIT CODE				KT A20 MR	KT A20 GR	KT A20 MG	

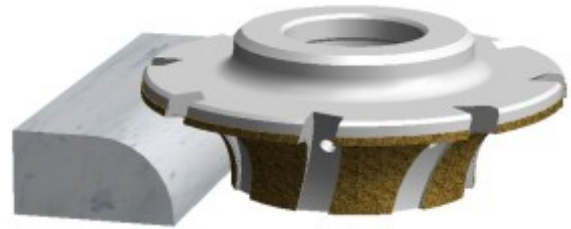
SPESSORE LASTRA 30 mm. / SLAB THICKNESS 30 mm.

CODICE CODE	PROFILO SHAPE	POSIZIONE POSITION	TIPO FASCIA RIM TYPE	KIT MARMO MARBLE KIT	KIT GRANITO GRANITE KIT	KIT MAR-GRA MAR-GRA KIT	APPLICAZIONE APPLICATION
MS A30 P1E MR	A30	1 ELE.	SETTORI/SECTOR	X		X	MAR.
MS A30 P1S GR	A30	1 SINT.	SETTORI/SECTOR		X	X	GRA.
MS A30 P2E MG	A30	2 ELE.	SETTORI/SECTOR	X		X	MAR./GRA.
MS A30 P2S GR	A30	2 SINT.	CONTINUA/CONTINUOUS		X		GRA.
MS A30 P3E MR	A30	3 ELE.	CONTINUA/CONTINUOUS	X		X	MAR.
MS A30 P3S MG	A30	3 SINT.	CONTINUA/CONTINUOUS		X		MAR./GRA.
MS A30 P4L MG	A30	4 LUX/POL.	-		X	X	MAR./GRA.
MS A30 P5L MG	A30	5 LUX/POL.	-	X	X	X	MAR./GRA.
MS A30 P6L MG	A30	6 LUX/POL.	-	X	X	X	MAR./GRA.
CODICE KIT / KIT CODE				KT A30 MR	KT A30 GR	KT A30 MG	

STANDARD: FORO 35 / BORE 35



PROFILO B
SHAPE B



SPESSORE LASTRA 20 mm. / SLAB THICKNESS 20 mm.

CODICE CODE	PROFILO SHAPE	POSIZIONE POSITION	TIPO FASCIA RIM TYPE	KIT MARMO MARBLE KIT	KIT GRANITO GRANITE KIT	KIT MAR-GRA MAR-GRA KIT	APPLICAZIONE APPLICATION
MS B20 P1E MR	B20	1 ELE.	SETTORI/SECTOR	X		X	MAR.
MS B20 P1S GR	B20	1 SINT.	SETTORI/SECTOR		X	X	GRA.
MS B20 P2E MG	B20	2 ELE.	SETTORI/SECTOR	X		X	MAR./GRA.
MS B20 P2S GR	B20	2 SINT.	CONTINUA/CONTINUOUS		X		GRA.
MS B20 P3E MR	B20	3 ELE.	CONTINUA/CONTINUOUS	X		X	MAR.
MS B20 P3S MG	B20	3 SINT.	CONTINUA/CONTINUOUS		X		MAR./GRA.
MS B20 P4L MG	B20	4 LUX/POL.	-		X	X	MAR./GRA.
MS B20 P5L MG	B20	5 LUX/POL.	-	X	X	X	MAR./GRA.
MS B20 P6L MG	B20	6 LUX/POL.	-	X	X	X	MAR./GRA.
CODICE KIT / KIT CODE				KT B30 MR	KT B30 GR	KT B30 MG	

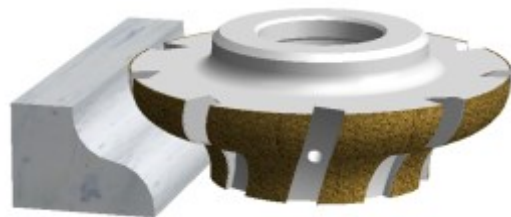
SPESSORE LASTRA 30 mm. / SLAB THICKNESS 30 mm.

CODICE CODE	PROFILO SHAPE	POSIZIONE POSITION	TIPO FASCIA RIM TYPE	KIT MARMO MARBLE KIT	KIT GRANITO GRANITE KIT	KIT MAR-GRA MAR-GRA KIT	APPLICAZIONE APPLICATION
MS B30 P1E MR	B30	1 ELE.	SETTORI/SECTOR	X		X	MAR.
MS B30 P1S GR	B30	1 SINT.	SETTORI/SECTOR		X	X	GRA.
MS B30 P2E MG	B30	2 ELE.	SETTORI/SECTOR	X		X	MAR./GRA.
MS B30 P2S GR	B30	2 SINT.	CONTINUA/CONTINUOUS		X		GRA.
MS B30 P3E MR	B30	3 ELE.	CONTINUA/CONTINUOUS	X		X	MAR.
MS B30 P3S MG	B30	3 SINT.	CONTINUA/CONTINUOUS		X		MAR./GRA.
MS B30 P4L MG	B30	4 LUX/POL.	-		X	X	MAR./GRA.
MS B30 P5L MG	B30	5 LUX/POL.	-	X	X	X	MAR./GRA.
MS B30 P6L MG	B30	6 LUX/POL.	-	X	X	X	MAR./GRA.
CODICE KIT / KIT CODE				KT B30 MR	KT B30 GR	KT B30 MG	

STANDARD: FORO 35 / BORE 35



PROFILO F
SHAPE F



SPESSORE LASTRA 20 mm. / SLAB THICKNESS 20 mm.

CODICE CODE	PROFILO SHAPE	POSIZIONE POSITION	TIPO FASCIA RIM TYPE	KIT MARMO MARBLE KIT	KIT GRANITO GRANITE KIT	KIT MAR-GRA MAR-GRA KIT	APPLICAZIONE APPLICATION
MS F20 P1E MR	F20	1 ELE.	SETTORI/SECTOR	X		X	MAR.
MS F20 P1S GR	F20	1 SINT.	SETTORI/SECTOR		X	X	GRA.
MS F20 P2E MG	F20	2 ELE.	SETTORI/SECTOR	X		X	MAR./GRA.
MS F20 P2S GR	F20	2 SINT.	CONTINUA/CONTINUOUS		X		GRA.
MS F20 P3E MR	F20	3 ELE.	CONTINUA/CONTINUOUS	X		X	MAR.
MS F20 P3S MG	F20	3 SINT.	CONTINUA/CONTINUOUS		X		MAR./GRA.
MS F20 P4L MG	F20	4 LUX/POL.	-		X	X	MAR./GRA.
MS F20 P5L MG	F20	5 LUX/POL.	-	X	X	X	MAR./GRA.
MS F20 P6L MG	F20	6 LUX/POL.	-	X	X	X	MAR./GRA.
CODICE KIT / KIT CODE				KT F20 MR	KT F20 GR	KT F20 MG	

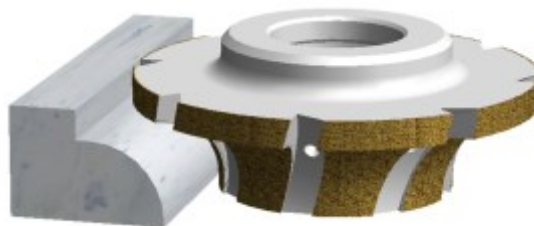
SPESSORE LASTRA 30 mm. / SLAB THICKNESS 30 mm.

CODICE CODE	PROFILO SHAPE	POSIZIONE POSITION	TIPO FASCIA RIM TYPE	KIT MARMO MARBLE KIT	KIT GRANITO GRANITE KIT	KIT MAR-GRA MAR-GRA KIT	APPLICAZIONE APPLICATION
MS F30 P1E MR	F30	1 ELE.	SETTORI/SECTOR	X		X	MAR.
MS F30 P1S GR	F30	1 SINT.	SETTORI/SECTOR		X	X	GRA.
MS F30 P2E MG	F30	2 ELE.	SETTORI/SECTOR	X		X	MAR./GRA.
MS F30 P2S GR	F30	2 SINT.	CONTINUA/CONTINUOUS		X		GRA.
MS F30 P3E MR	F30	3 ELE.	CONTINUA/CONTINUOUS	X		X	MAR.
MS F30 P3S MG	F30	3 SINT.	CONTINUA/CONTINUOUS		X		MAR./GRA.
MS F30 P4L MG	F30	4 LUX/POL.	-		X	X	MAR./GRA.
MS F30 P5L MG	F30	5 LUX/POL.	-	X	X	X	MAR./GRA.
MS F30 P6L MG	F30	6 LUX/POL.	-	X	X	X	MAR./GRA.
CODICE KIT / KIT CODE				KT F30 MR	KT F30 GR	KT F30 MG	

STANDARD: FORO 35 / BORE 35



PROFILO H
SHAPE H



SPESSORE LASTRA 20 mm. / SLAB THICKNESS 20 mm.

CODICE CODE	PROFILO SHAPE	POSIZIONE POSITION	TIPO FASCIA RIM TYPE	KIT MARMO MARBLE KIT	KIT GRANITO GRANITE KIT	KIT MAR-GRA MAR-GRA KIT	APPLICAZIONE APPLICATION
MS H20 P1E MR	H20	1 ELE.	SETTORI/SECTOR	X		X	MAR.
MS H20 P1S GR	H20	1 SINT.	SETTORI/SECTOR		X	X	GRA.
MS H20 P2E MG	H20	2 ELE.	SETTORI/SECTOR	X		X	MAR./GRA.
MS H20 P2S GR	H20	2 SINT.	CONTINUA/CONTINUOUS		X		GRA.
MS H20 P3E MR	H20	3 ELE.	CONTINUA/CONTINUOUS	X		X	MAR.
MS H20 P3S MG	H20	3 SINT.	CONTINUA/CONTINUOUS		X		MAR./GRA.
MS H20 P4L MG	H20	4 LUX/POL.	-		X	X	MAR./GRA.
MS H20 P5L MG	H20	5 LUX/POL.	-	X	X	X	MAR./GRA.
MS H20 P6L MG	H20	6 LUX/POL.	-	X	X	X	MAR./GRA.
CODICE KIT / KIT CODE				KT H20 MR	KT H20 GR	KT H20 MG	

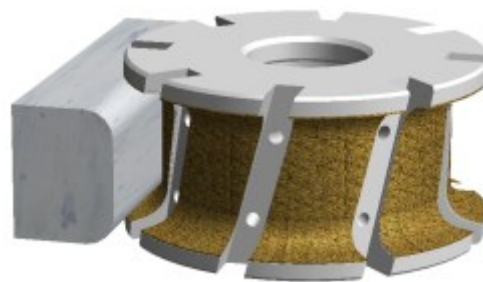
SPESSORE LASTRA 30 mm. / SLAB THICKNESS 30 mm.

CODICE CODE	PROFILO SHAPE	POSIZIONE POSITION	TIPO FASCIA RIM TYPE	KIT MARMO MARBLE KIT	KIT GRANITO GRANITE KIT	KIT MAR-GRA MAR-GRA KIT	APPLICAZIONE APPLICATION
MS H30 P1E MR	H30	1 ELE.	SETTORI/SECTOR	X		X	MAR.
MS H30 P1S GR	H30	1 SINT.	SETTORI/SECTOR		X	X	GRA.
MS H30 P2E MG	H30	2 ELE.	SETTORI/SECTOR	X		X	MAR./GRA.
MS H30 P2S GR	H30	2 SINT.	CONTINUA/CONTINUOUS		X		GRA.
MS H30 P3E MR	H30	3 ELE.	CONTINUA/CONTINUOUS	X		X	MAR.
MS H30 P3S MG	H30	3 SINT.	CONTINUA/CONTINUOUS		X		MAR./GRA.
MS H30 P4L MG	H30	4 LUX/POL.	-		X	X	MAR./GRA.
MS H30 P5L MG	H30	5 LUX/POL.	-	X	X	X	MAR./GRA.
MS H30 P6L MG	H30	6 LUX/POL.	-	X	X	X	MAR./GRA.
CODICE KIT / KIT CODE				KT H30 MR	KT H30 GR	KT H30 MG	

STANDARD: FORO 35 / BORE 35



PROFILO T
SHAPE T



SPESSORE LASTRA 20 mm. / SLAB THICKNESS 20 mm.

CODICE CODE	PROFILO SHAPE	POSIZIONE POSITION	TIPO FASCIA RIM TYPE	KIT MARMO MARBLE KIT	KIT GRANITO GRANITE KIT	KIT MAR-GRA MAR-GRA KIT	APPLICAZIONE APPLICATION
MS T20 P1E MR	T20	1 ELE.	SETTORI/SECTOR	X		X	MAR.
MS T20 P1S GR	T20	1 SINT.	SETTORI/SECTOR		X	X	GRA.
MS T20 P2E MG	T20	2 ELE.	SETTORI/SECTOR	X		X	MAR./GRA.
MS T20 P2S GR	T20	2 SINT.	CONTINUA/CONTINUOUS		X		GRA.
MS T20 P3E MR	T20	3 ELE.	CONTINUA/CONTINUOUS	X		X	MAR.
MS T20 P3S MG	T20	3 SINT.	CONTINUA/CONTINUOUS		X		MAR./GRA.
MS T20 P4L MG	T20	4 LUX/POL.	-		X	X	MAR./GRA.
MS T20 P5L MG	T20	5 LUX/POL.	-	X	X	X	MAR./GRA.
MS T20 P6L MG	T20	6 LUX/POL.	-	X	X	X	MAR./GRA.
CODICE KIT / KIT CODE				KT T20 MR	KT T20 GR	KT T20 MG	

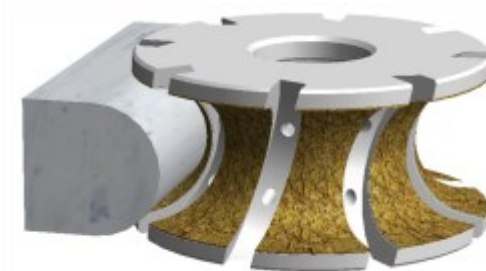
SPESSORE LASTRA 30 mm. / SLAB THICKNESS 30 mm.

CODICE CODE	PROFILO SHAPE	POSIZIONE POSITION	TIPO FASCIA RIM TYPE	KIT MARMO MARBLE KIT	KIT GRANITO GRANITE KIT	KIT MAR-GRA MAR-GRA KIT	APPLICAZIONE APPLICATION
MS T30 P1E MR	T30	1 ELE.	SETTORI/SECTOR	X		X	MAR.
MS T30 P1S GR	T30	1 SINT.	SETTORI/SECTOR		X	X	GRA.
MS T30 P2E MG	T30	2 ELE.	SETTORI/SECTOR	X		X	MAR./GRA.
MS T30 P2S GR	T30	2 SINT.	CONTINUA/CONTINUOUS		X		GRA.
MS T30 P3E MR	T30	3 ELE.	CONTINUA/CONTINUOUS	X		X	MAR.
MS T30 P3S MG	T30	3 SINT.	CONTINUA/CONTINUOUS		X		MAR./GRA.
MS T30 P4L MG	T30	4 LUX/POL.	-		X	X	MAR./GRA.
MS T30 P5L MG	T30	5 LUX/POL.	-	X	X	X	MAR./GRA.
MS T30 P6L MG	T30	6 LUX/POL.	-	X	X	X	MAR./GRA.
CODICE KIT / KIT CODE				KT T30 MR	KT T30 GR	KT T30 MG	

STANDARD: FORO 35 / BORE 35



PROFILO V
SHAPE V



SPESSORE LASTRA 20 mm. / SLAB THICKNESS 20 mm.

CODICE CODE	PROFILO SHAPE	POSIZIONE POSITION	TIPO FASCIA RIM TYPE	KIT MARMO MARBLE KIT	KIT GRANITO GRANITE KIT	KIT MAR-GRA MAR-GRA KIT	APPLICAZIONE APPLICATION
MS V20 P1E MR	V20	1 ELE.	SETTORI/SECTOR	X		X	MAR.
MS V20 P1S GR	V20	1 SINT.	SETTORI/SECTOR		X	X	GRA.
MS V20 P2E MG	V20	2 ELE.	SETTORI/SECTOR	X		X	MAR./GRA.
MS V20 P2S GR	V20	2 SINT.	CONTINUA/CONTINUOUS		X		GRA.
MS V20 P3E MR	V20	3 ELE.	CONTINUA/CONTINUOUS	X		X	MAR.
MS V20 P3S MG	V20	3 SINT.	CONTINUA/CONTINUOUS		X		MAR./GRA.
MS V20 P4L MG	V20	4 LUX/POL.	-		X	X	MAR./GRA.
MS V20 P5L MG	V20	5 LUX/POL.	-	X	X	X	MAR./GRA.
MS V20 P6L MG	V20	6 LUX/POL.	-	X	X	X	MAR./GRA.
CODICE KIT / KIT CODE				KT V20 MR	KT V20 GR	KT V20 MG	

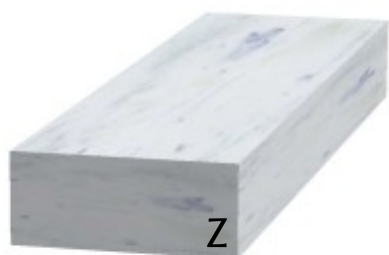
SPESSORE LASTRA 30 mm. / SLAB THICKNESS 30 mm.

CODICE CODE	PROFILO SHAPE	POSIZIONE POSITION	TIPO FASCIA RIM TYPE	KIT MARMO MARBLE KIT	KIT GRANITO GRANITE KIT	KIT MAR-GRA MAR-GRA KIT	APPLICAZIONE APPLICATION
MS V30 P1E MR	V30	1 ELE.	SETTORI/SECTOR	X		X	MAR.
MS V30 P1S GR	V30	1 SINT.	SETTORI/SECTOR		X	X	GRA.
MS V30 P2E MG	V30	2 ELE.	SETTORI/SECTOR	X		X	MAR./GRA.
MS V30 P2S GR	V30	2 SINT.	CONTINUA/CONTINUOUS		X		GRA.
MS V30 P3E MR	V30	3 ELE.	CONTINUA/CONTINUOUS	X		X	MAR.
MS V30 P3S MG	V30	3 SINT.	CONTINUA/CONTINUOUS		X		MAR./GRA.
MS V30 P4L MG	V30	4 LUX/POL.	-		X	X	MAR./GRA.
MS V30 P5L MG	V30	5 LUX/POL.	-	X	X	X	MAR./GRA.
MS V30 P6L MG	V30	6 LUX/POL.	-	X	X	X	MAR./GRA.
CODICE KIT / KIT CODE				KT V30 MR	KT V30 GR	KT V30 MG	

STANDARD: 1/2 GAS



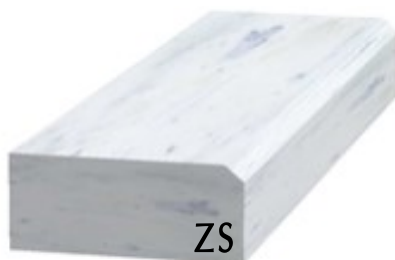
PROFILI STANDARD / STANDARD PROFILES



Z

PROFILO Z / SHAPE Z

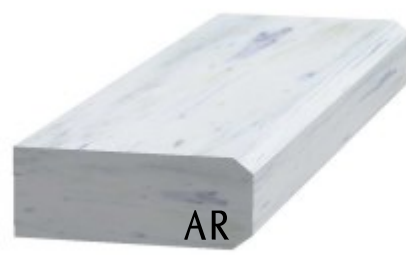
CODICE CODE	SPESSORE LASTRA SLAB THICKNESS
Z20 GAS	20
Z30 GAS	30
Z40 GAS	40



ZS

PROFILO ZS / SHAPE ZS

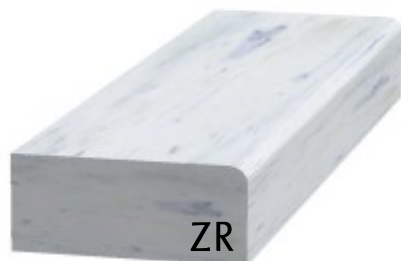
CODICE CODE	SPESSORE LASTRA SLAB THICKNESS
ZS20 GAS	20
ZS30 GAS	30
ZS40 GAS	40



AR

PROFILO AR / SHAPE AR

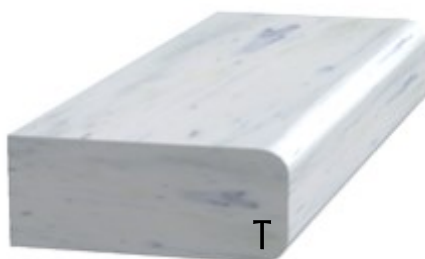
CODICE CODE	SPESSORE LASTRA SLAB THICKNESS
AR20 GAS	20
AR30 GAS	30
AR40 GAS	40



ZR

PROFILO ZR / SHAPE ZR

CODICE CODE	SPESSORE LASTRA SLAB THICKNESS
ZR20 GAS	20
ZR30 GAS	30
ZR40 GAS	40



T

PROFILO T / SHAPE T

CODICE CODE	SPESSORE LASTRA SLAB THICKNESS
T20 GAS R5	20
T30 GAS R6	30
T40 GAS R8	40



TIPO TYPE	BAVELLONI	CMS/BREMBANA	DENVER/HELIOS	INTERMAC	OMAG
--------------	-----------	--------------	---------------	----------	------



1/2 GAS	ISO40 GAS BAV	ISO40 GAS BRM	ISO40 GAS DNV	ISO40 GAS INT	ISO40 GAS OMA
---------	---------------	---------------	---------------	---------------	---------------



22x34	ISO40 2234 BAV	-	-	ISO40 2234 INT	-
-------	----------------	---	---	----------------	---



35x39	ISO40 3539 BAV	ISO40 3539 BRM	ISO40 3539 DNV	ISO40 3539 INT	-
-------	----------------	----------------	----------------	----------------	---



35x47	ISO40 3547 BAV	ISO40 3547 BRM	ISO40 3547 DNV	ISO40 3547 INT	ISO40 3547 OMA
-------	----------------	----------------	----------------	----------------	----------------



50x5 6F	ISO40 505C BAV	ISO40 505L BRM	ISO40 505C DNV	ISO40 505C INT	ISO40 505C OMA
---------	----------------	----------------	----------------	----------------	----------------

G40 EAM



AGUT - PRUSSIANI



PINZE SSK



PULISCICONO



STANDARD: ACCIAIO CON RIVESTIMENTO DI NICHEL / NICKEL COVERED STEEL



ATTACCO 1/2 GAS / 1/2 GAS FITTING

PROLUNGHE / EXTENSIONS

CODICE	TIPO	LUNGHEZZA
CODE	TYPE	LENGTH
PL GAS 050	1/2 GAS	50
PL GAS 100	1/2 GAS	100



ATTACCO FLANGIA 50x5 6 FORI/ FLANGE FITTING 50x5 6

PROLUNGHE / EXTENSIONS

CODICE	TIPO	LUNGHEZZA
CODE	TYPE	LENGTH
PL FLA 100	50x5 6 F	100
PL FLA 150	50x5 6 F	150
PL FLA 200	50x5 6 F	200



ATTACCO 1/2 GAS / 1/2 GAS FITTING

ADATTATORI / ADAPTORS

CODICE	TIPO	LUNGHEZZA
CODE	TYPE	LENGTH
AD GAS FLA050	50x5 6 F	50
AD GAS FLA100	50x5 6 F	100
AD GAS D10	10x5 2 F	70



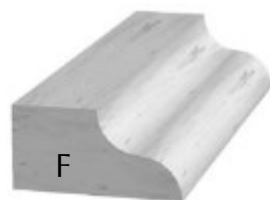
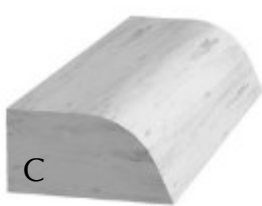
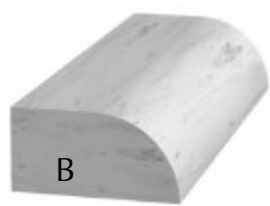
ATTACCO FLANGIA 50x5 6 FORI/ FLANGE FITTING 50x5 6

ADATTATORI / ADAPTORS

CODICE	TIPO	LUNGHEZZA
CODE	TYPE	LENGTH
AD FLA GAS100	1/2 GAS	100
AD FLA GAS150	1/2 GAS	150
AD FLA GAS200	1/2 GAS	200



AD FLA FLA200 70x4 8 F 200



FRESE IN WIDIA PER SCULTURA / BAS-RELIEF WIDIA MILLING CUTTERS

GAMBO CILINDRICO / CYLINDRICAL SHANK



PNT MDI 0620 R1,5



PNT MDI 1250 R2,5



PNT MD 1228 R1 L228



PNT MD 1228 R3 L228

CODICE CODE	Ø	GRADI DEGREES	RAGGIO RADIUS	GAMBO SHANK	LUNGH. TAGLIO CUTTING LENGTH	LUNGH. TOTALE TOTAL LENGTH
PNT MDI 0620 R1,5	6	12	1,5	6	20	65
PNT MDI 1250 R2,5	12	15	2,5	12	50	150
PNT MD 1228 R1 L228	12	20	1	12	28	228
PNT MD 1228 R3 L228	12	18	3	12	28	228

GAMBO CILINDRICO CON TESTINA INTERCAMBIABILE / CYLINDRICAL SHANK WITH CHANGEABLE HEAD



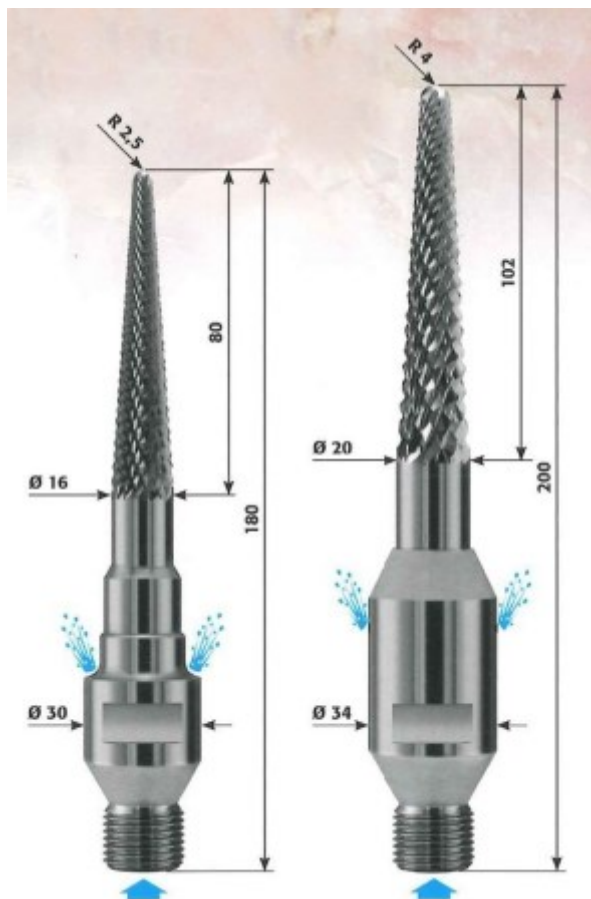
CODICE CODE	Ø	GRADI DEGREES	RAGGIO RADIUS	GAMBO SHANK	LUNGH. TAGLIO CUTTING LENGTH	LUNGH. TOTALE TOTAL LENGTH
PNT MD 1230 R3	12	15	3	M6	30	40
AD 12150 PNTMD	12	-	-	12/M6	-	150

FRESE INTEGRALI WIDIA PER INCISIONE / ENGRAVING INTEGRAL WIDIA MILLING CUTTERS

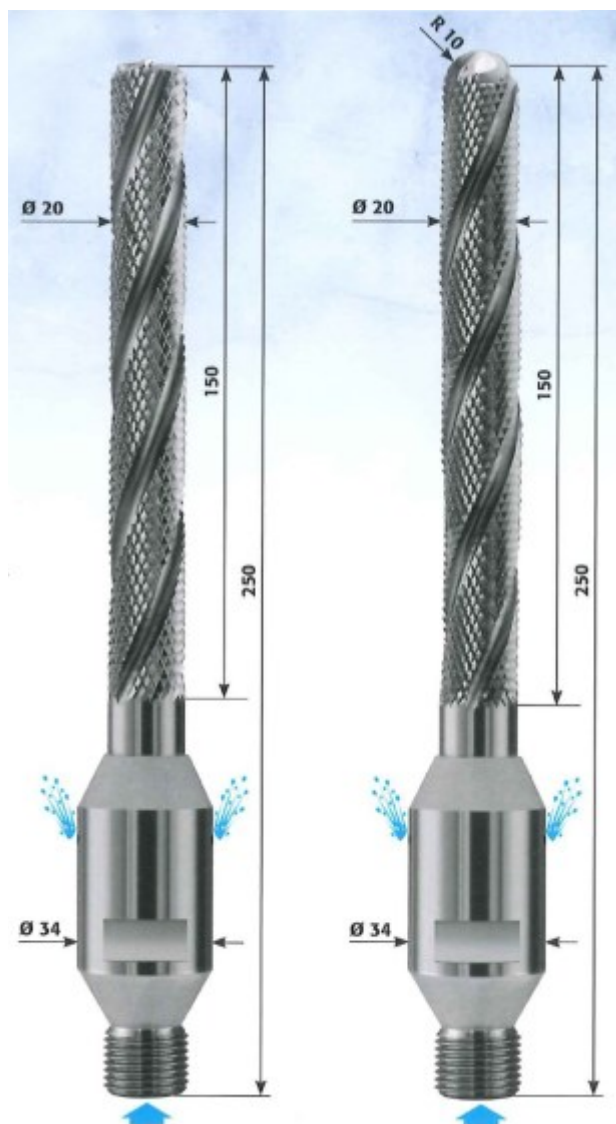


CODICE CODE	Ø	GRADI DEGREES	PIANO FLAT	GAMBO SHANK	PASS. ACQUA WATER COOLING
PNTMDI1060DOUBLE	10	60	0	10	NO
PNTMDI1090DOUBLE	10	90	0	10	NO

FRESE IN WIDIA LUNGHE PER SCULTURA / LONG WIDIA MILLING CUTTERS FOR BAS-RELIEF



PNT MD 1616/6x80 PNT MD 2016/6x102



PNT MD 2030/6x150 PNT MD 2036/6x150 R10

UTENSILI PER LAPITEC® DEKTON® / TOOLS FOR LAPITEC® DEKTON®



CODICE CODE	DIAMETRO DIAMETER	ALTEZZA HEIGHT
SRLPCGAS35	35	45

CODICE CODE	DIAMETRO DIAMETER	ALTEZZA HEIGHT
SRLP2025GAS	20	25
SRLP2030GAS	20	30
SRLP2035GAS	20	35

CODICE CODE	DIAMETRO DIAMETER	ALTEZZA HEIGHT
SRLPMS8520	85	20

CODICE	DESCRIZIONE	N DI GIRI	AVANZAMENTO X-Y	AVANZAMENTO Z
CODE	DESCRIPTION	RPM	X - Y FEED	Z FEED

